

Annual Report 2021

MILANG AND DISTRICT COMMUNITY ASSOCIATION INC.

ABN: 69 623 040 557

MILANG & DISTRICT COMMUNITY ASSOCIATION INC.





*Yunti Ngopun Ngami ; Together We Walk
Artwork by Allan Sumner*

We acknowledge the Ngarrindjeri people on whose land we meet and we pay our respects to the Elders past and present.

Ngarrindjeri Vision for Country: Kungun Ngarrindjeri Yunnan (Listen to what Ngarrindjeri people have to say)

“Our Lands, Our Waters, Our People, All Living Things are connected. We implore people to respect our Ruwe (Country) as it was created in the Kaldowinyeri (the Creation). We long for sparkling, clean waters, healthy land and people and all living things. We long for the Yarlumar-Ruwe (Sea Country) of our ancestors. Our vision is all people Caring, Sharing, Knowing and Respecting the lands, the waters and all living things.” - From Ngarrindjeri Nation Yarlumar-ruwe plan 2006

Strategic Plan

OUR VISION

Healthy Communities Sustainable Habitats

We Value:

- Honesty and Fairness
- Teamwork, Mutual Respect and Diversity
- Reliability and Responsibility
- Ethical Service Provision and Commitment to Quality
- Care for the People and the Environment
- Equality and Inclusivity

Our Purpose:

- Foster the importance of social diversity, community spirit and community relationships
- Value and protect the peace and natural beauty of our environment
- Acknowledging the Ngarrindjeri people as the spiritual custodians of this land
- Ensuring that local communities are listened to and are actively involved in decision making that will affect them
- To respond to both individual and community needs
- Building capacity by empowering groups and fostering resilience
- Provide services and activities which meet those needs
- Adopt and promote ecological sustainability
- Commit to working together to achieve goals



MADCA

MANAGEMENT COMMITTEE

President: John Whyte Don McInness

Vice President: Alan
Beaumont Gordy Rollins

Treasurer: Mike
Linscott Denise McGrice

Secretary: Annie
Whyte Richard Prusa
Karen Burkinshaw
Ray Perry

Ex Officio Members:

Stuart Jones, MADCA Manager

Cllr Karyn Bradford, Alexandrina
Council Representative

STAFF

Stuart Jones, MADCA Manager

Colleen Whyte, GLC Program Manager

Gordy Rollins, GLC Liaison Officer & MOSHCC Admin Assistant

Vivienne Maher, Our Towns Project Officer

Annie Whyte, Lakes Home Care Coordinator

Cheryl Butlin, Lakes Home Care Admin & Activities

Prue Turner, Lakes Home Care Admin

Britteny Fleming, Cathy Ward & Kym Ingram - Casual Child Care

Liz Lewis, MOSHCC Cleaner

Cameron Davidson, Grounds

PRESIDENT'S REPORT

John Whyte

My second year as President and I congratulate our Management Team who have supported and steered MADCA through the year.

It has been a very intense year and I thank the many staff and volunteers who have worked so hard to achieve our success, turning the Centre around, to now showing a satisfactory profit.

Stuart our MADCA Manager has done a magnificent job of learning our new accounting system Xero. Checking income against expenditure, he has a real handle on our budget and monitors our situation before issues can become serious.

Stuart is now overseeing a fast growing organisation from our Community Centre. We have plans for a youth group to be housed at the old Regatta Club. The lease for the building is expected to be granted any time by the Department for Environment and Water. Once this is signed, we will seek funding for a youth officer, and minibus to provide transport around our region.

My wife Annie stepped up and steered Lakes Home Care through a rebuilding process to where we are now showing a respectable profit each month. She has just sourced two new lease cars, which will be renewed every nine months keeping a new fleet and used by support workers for transport etc.. She is also moving into NDIS support, which will grow the business and employ more support workers.

The Butter Factory Committee who successfully navigated its restoration through the last seven years



with so many people who have worked so hard in fund-raising, working bees, meetings, grant applications, and acting site manager, all who have volunteered their time willingly and with great enthusiasm.

The Butter Factory once completed will provide MADCA Inc. with income that can be channeled into our charitable endeavours. The attraction will become a great draw card, attracting tourists to our region and of course provide valuable employment opportunities for our region.

To promote and market the Butter Factory, we are initiating a new web site using short videos to highlight attractions and promote business in our region. We have been fortunate to engage an experienced film maker who will be joined by a local film editor to produce promotional videos. The project will help promote businesses in our area at an affordable price. This will then provide material for the new age of mobile devices, which is where people are sourcing their information today.

MADCA Inc., is about to undergo a big change as we move into a charitable status. Our Growing Life Connections team have highlighted the ever-increasing numbers of homeless needing a place to feel safe and warm.

Social housing is a complex problem and requires some out of the square thinking to come up with innovating ways in which to assist the problem. To this end an action group has been formed with people who are focused on solutions to the homeless. We are seeking sustainable solutions that will provide a long-term fix to the issues. I am extremely humbled to be part of this and feel it is of

great value to provide solutions for this under-privilege sector.

One of our greatest assets is the Milang Community News, and I give a big thank you to our small and tireless team Richard Prusa, who works late into the night to guarantee its printing by the 1st of the month, and of course our new editor Cathy Fish who is doing such a great job pounding the keyboard and putting the publication together. I think all would agree that it looks great, and it keeps everyone up to date with what is happening in our area and provides an affordable advertising forum for local businesses.

I would also applaud Norm and Glenis Foster who have developed Milang into a "country music hot spot", inviting inter-state musicians to concert's at our institute hall. All proceeds have been channeled to our Butter factory and once again highlights the initiative of our community.

As you will see from this annual report, we operate many different programs for our community. Our truly diversified organisation provides a large range of activities and provides a friendly and happy atmosphere. I believe that many of our volunteers derive great satisfaction and enjoyment out of their time here, I also know that many gain self-confidence and skills which they take to other areas of their life.

The town of Milang is a great place and our Association is blessed to have an inspiring and skilled management team with a great diversity.

I know we will have a great future as we all move forward and I thank all our staff and large number of volunteers for their enthusiasm and dedicated labour.

MANAGER'S REPORT

Stuart Jones, MADCA Manager

What an interesting year this has been! We have had to be flexible, innovative and ready to change plans, sometimes in 12hrs or less if the daily press conferences on the COVID situation make changes to restrictions in SA.

While we continue to plan ahead for various events, sometimes they can't continue. A number of Butter Factory Fundraising concerts were cancelled and delayed, and despite our careful planning for a covid-safe Christmas event last year, we had to pull the plug when a snap lockdown and heavy restrictions came in November.

My role of managing the day-to-day operations of MADCA can be a challenge, but one I love and one that would be so much harder if not for the amazing work of the staff and volunteers in our organisation.

Over this year MADCA employed 34 staff through the Milang Old School House Community Centre including full-time, part-time and casual workers. By employing local people over \$528,000 in wages has gone back into the local community. And that doesn't include



the small businesses we contract for other work including home and garden maintenance.

A point of pride for the Butter Factory will also be the local businesses and tradespeople that have been contracted in the various stages (That's another almost \$240,000 this year). It will truly be something for local people to be proud of.

Add to all this over 10,000 hours of volunteer work that has been undertaken in the community through MADCA programs in this year.

I'd like to particularly thank Lyn for her work getting our Volunteer records in order, it's so important to stay on top of paperwork and it can be a hard task and I appreciate her follow up and commitment.

Richard also works along with Lyn for new volunteer sign ups and also did a great job organising the Volunteer BBQ, I hope we can do something again soon!

I would also like to note the retirement of Rosemary Evans at the end of 2020. On behalf of the staff, volunteers, children and parents at Milang Old School House Community Centre would like to thank Rosemary Evans for her long service to the community.

For 17 years Rosemary has been one of the biggest hearts of the centre, caring with love for the most precious little ones of our community, a long-lasting and valuable contribution if ever there was one. We wish Rosemary all the best in her well-deserved retirement. I spent a few years working with Rosemary in the Creche

and it is one of the most rewarding, but still challenging roles.

A couple of things have been bubbling away this year in regards to youth programs. We hosted a youth evening at the Community Centre to gauge interest in programs in Milang and one of the key points raised was transport. There was also keen interest for activities to occur in Milang and also to attend programs elsewhere.

We have had the paperwork back from the Department for Environment and Water and the Old Regatta Club is now officially signed over to us (we just await an invoice). We are just giving the Regatta Club some time as they finish their move, and we hope to get something happening at least in a small way by Term 4 for the youth. We thank the Milang Regatta Club for their support in the transfer and for their desire to see the old clubhouse used for the community going forward.

We've got so many strengths within the team, and I so greatly admire and appreciate the hard work put in every single day by our Staff and Volunteers across MADCA, and your support for our community.

Thank you, and I look forward to another great year together and supporting each other, whether that's in-person, online, masked, unmasked, socially distanced...



MILANG LAKESIDE BUTTER FACTORY

Mike Galea, Project Manager

The Butter Factory project continues to progress well and smoothly. Covid-19 has significantly impacted the process timelines, including the lack or unavailability of contractors and materials.

Since my last report, the following was completed: all the structural engineering works; new wall framing and supports for old existing wall framing, new barge boards and fascias as required; new heritage roofing iron gutters and downpipes; heritage iron wall sheeting; painting; stormwater; stonework by specialised stonemasons; starting the electrical upgrade; new decking facing the Daranda Tce elevation; the new foyer addition, new rear pergola, new doors, windows, and hardware; with lock-up either achieved by the publication of this report, or imminent.

Around 90% of trades involved with this project are locals, and I am grateful to all who have done 'above and beyond' and often for reduced costs. Additionally, most materials were either from the Fleurieu region or elsewhere in South Australia.

JB and all the volunteers have been doing a fabulous job and are a credit to the Milang community spirit.





A special thanks go to Chris Bagley for his efforts in trying to get grant funds. It is a tough job, and I know how disheartening it can be when we 'lose out' on some grant funds. I am trying to watch every penny carefully; however, more funds will

be required to see the project to full completion. The administrative support from Stuart Jones has been invaluable, and John Whyte has been enthusiastic in creative ways of gaining more funds to finish the project.

Mike Galea
Project Manager



ADULT COMMUNITY EDUCATION

Stuart Jones

This program aims to increase participants skills in various areas including Language Literacy and Numeracy, Core Skills for Work and Digital Literacy.

Following from last years abbreviated program due to COVID-19 we have weathered many changing restriction affecting the running of classes at MOSHCC.

Thought this year we have run:

- Fibre Art
- One-to-one computing
- Ukulele
- Creating a website with Wordpress
- Budgeting

Our new budgeting course was well received and I would like to thank Gordy and Prue for putting in the time to plan and deliver this great program.



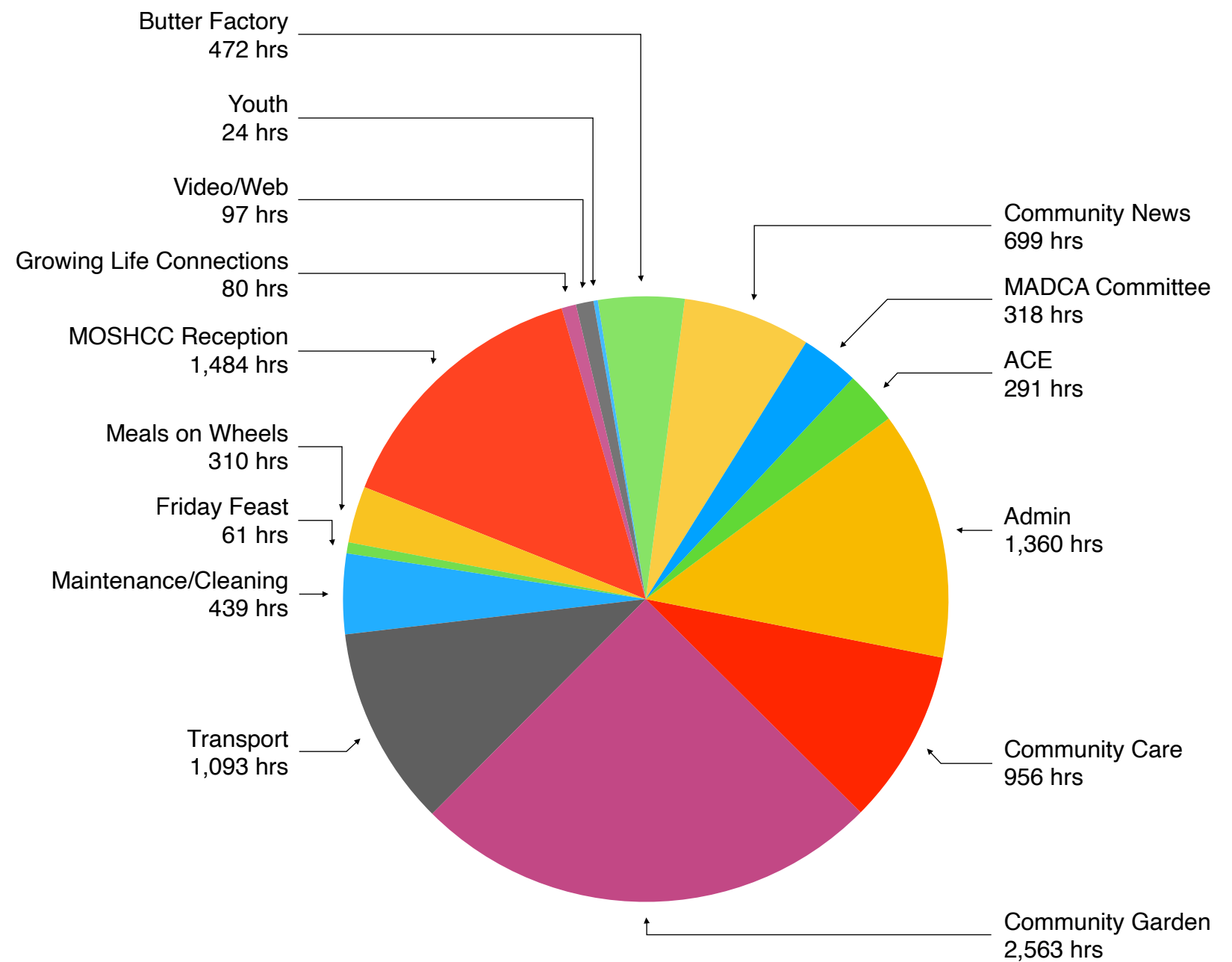
VOLUNTEERS

Our organisation runs on the work of 88 currently registered volunteers across all our programs.

This is a snapshot of the work put in by our volunteers. On record our volunteers put in 10,320.35 hours to the overall work of MADCA this year.

In March we were able to have a volunteer BBQ get-together down by the lake with some music a nice way to catch up after a year of covid restrictions.

We thank all our volunteers for their commitment and their passion for the Community



LAKES HOME CARE

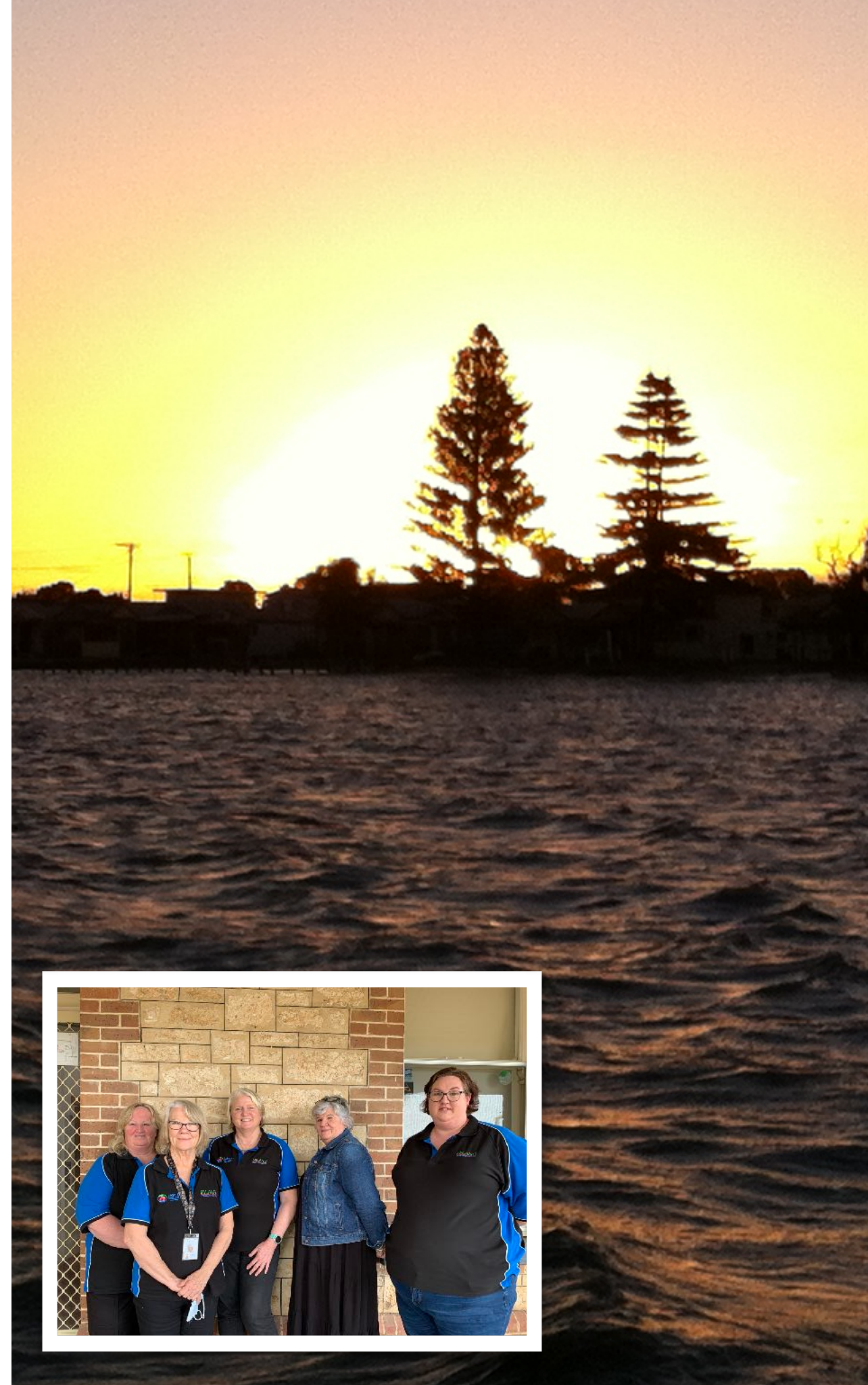
Annie Whyte & Cheryl Butlin

In a year of many challenges, we end the financial year on a huge positive note.

When taking on a challenge as big as this one at times you question yourself as to whether or why, whether is “absolutely” if you don’t challenge yourself then the results won’t come. The why is “because” each and everyone one of our clients deserves the best care and service we can possibly provide.

Did we get everything right? Probably not. Did we make a few mistakes? Absolutely, but we persisted, and we made some huge changes. We stepped up to being there for those who needed us most throughout this year. Covid-19 is a word we hear all too often and fortunately for us here in South Australia we have weathered the storm better than our other states. It was at times a huge stumbling block to work through, but we have, and will continue to do so should the need arise in the future.

Lakes Home Care has had great results through the past year, we have increased our client base, improved our systems, and leased some of our own vehicles to fill the void of the much-needed





transport within the community.

Have we made a profit? We sure have and that helps put in place better training for our support worker's, better resources to enable us to keep up to date with the ever changing environment and the Quality standards we need to meet as an organisation to improve our services to you.

Throughout the year we have been faced with many challenges, staff changes, role changes and system changes from the Government sector. Stuart and I have been undergoing some training as the My Aged Care Sector rolls out its new improved payment arrangements moving us across from being provided the funding in advance to now in arrears, and changes to the way in which we submit our claims for payment after we have provided the service to our clients.

To this end, I wish to thank the team out of the Lakes Home Care office, that have all put in many dedicated hours, helped implement some changes that will continue to improve our services moving forward. We will continue to improve as we move into 2021-2022.

On a personal level I wish to thank the support of the committee and our Manager Stuart, for supporting me throughout the past two years, allowing me to work through the challenges and derive a process of improvement to put us in a much better financial position.

Annie Whyte

GROWING LIFE CONNECTIONS

Colleen White, Gordy Rollins, Vivienne Maher

Growing Life Connections (GLC) at MOSHCC was offered a chance to receive funding through a partnership with the Faye Fuller Foundation and DHS (Department of Human Services)

In 2020 we attended several ZOOM meetings with FFF and DHS and also TACSI (The Australian Centre for Social Innovation). These meetings were arranged so that the three towns who had applied for funding from FFF in 2019 and were not successful, would then have an opportunity to gain some funding for 12 months. GLC was accepted for a grant of \$50,000 to employ a Project Officer under the banner of Our Towns Project. After securing the funding the Alexandrina Council offered us funding to increase this position from two days to three days per week.

So GLC staff has grown to three - we have a new staff member - Vivienne Maher

Vivienne Maher is a local and has much knowledge of our region and many skills and experience to pull this project together.

Vivienne has worked in the Community Services sector for the last 10 years across Murraylands and Fleurieu Regions. She is passionate about mental health (Wellness) and Suicide Prevention.



This is a regional project spanning a cluster of 7 towns - Strathalbyn, Milang, Langhorne Creek, Woodchester, Ashbourne, Finniss, and Clayton Bay.

Vivienne will facilitate, support and training for volunteers across the regions. This support to volunteers will then encourage them to continue to assist others in their community.

Our Towns Project will focus specifically at reaching the isolated and vulnerable families and individuals.

You may meet Vivienne soon as she makes links with existing groups in each town. If you are interested in volunteering with Vivienne, please just call MOSHCC - 85370687

Last year was difficult for many but GLC continued to support community members through creative means. GLC groups met on DUO (like FaceTime), a new medium for many but it was fun and everyone who joined in enjoyed the benefit of seeing others, while sitting in their own lounge room.

September 2020, we organised "Food For Families"- we changed the name from Anti-Poverty. We found a huge influx of food collected and given out. This showed the community understood where the food would go and were then willing to give. We collected 46 bins full of food. All breakfast goods go to the schools who have a breakfast program - and the rest of the food is then divided between the four Emergency Relief Centres in partnership through GLC.

GLC support group Connecting the Dots were creative about our outings, having several BBQ's in the park in Strathalbyn. We followed the COVID 19 protocol - but still enjoyed time together.

The Mermaids support groups enjoyed a couple of meals and movies at MOSHCC again abiding by all the COVID 19 rules.

During 2020 some changes occurred - GLC connected with Mission Australia - the service who has the funding for the NDIS in our region. This was a positive partnership as I was then able to place several referrals and then continue to assist clients to apply for the NDIS. This was then mirrored by LHC taking on some clients which has expanded the possibilities in our communities.

GLC also connected with Junction Australia within a new framework - this too has brought a closer partnership as we worked together to help community members access affordable housing.

Late 2020 GLC joined with Strath Neighbourhood Centre in Strathalbyn and organised a Christmas Lunch on the 25th December. We served 76 meals - it was very successful. Alexandrina Council supplied the finances to fund this event.

2021 was very exciting to gain a new team member in Vivienne joining GLC.

We organised a few events; firstly, our GLC Quiz night - this was very popular with near on a full house. The band who played without any fee was excellent and this made the evening a real success.

GLC worked toward our event "Milang's Got Talent" but unfortunately this was cancelled due to lockdown. We have an alternative date on October 16th in the Institute - please come along and support this event.

GLC has a partnership with the Alcohol & Drug Foundation - for the past two years we have facilitated LDAT meetings (Local Drug and Alcohol team) but unfortunately it has become too difficult to continue with the present COVID constraints. We will look at this again in 2022 as we believe education regarding alcohol and drugs is important for all in the communities.

I have personally found that several people have been assisted through counselling and referrals to other services to continue with personal growth.

2021 has also been a year to advocate for others - vulnerable people can find it difficult to follow through with goals and at times require support.

In the last couple of months five people have received support as they have been homeless.

This has prompted a couple of people to meet together and discuss how we can change this situation and lobby for affordable housing in the Fleurieu.

On Thursday 26th August we are holding a meeting with a few more people who also have a passion to see a plan go ahead to face this problem and not accept that people sleeping in tents/ or

in their car is OK. It is definitely not OK. Please watch this space - also if you have a few ideas about this situation please talk with either me or John Whyte.

Last Friday - 20th August GLC organised an EXPO of services, this event was held in the Strathalbyn Show Hall. We had 37 services who attended.

I find myself busy every day in my position of GLC Coordinator, but it is fulfilling work as I learn so much from the many I meet. Amazing people who trust someone with their story - it truly is a privilege to listen and support a person to be able to find some hope to continue their journey.

GLC has gained funding from DHS until October 2022. We are waiting to see what will happen after that time.

I want to thank the many who have supported us in the GLC office and been willing to assist others if we are not around. This is the best partnership - community helping one another.

Colleen Whyte
Growing Life Connections
Program Manager

OUR TOWNS

Vivienne Maher

At the beginning of 2021 I was employed by MOSHCC as a project officer for the 'Our Towns' Project.

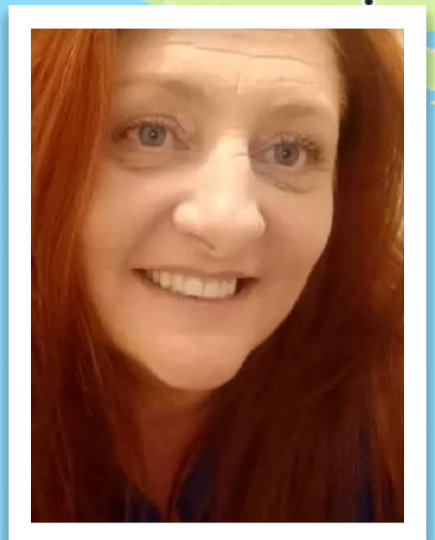
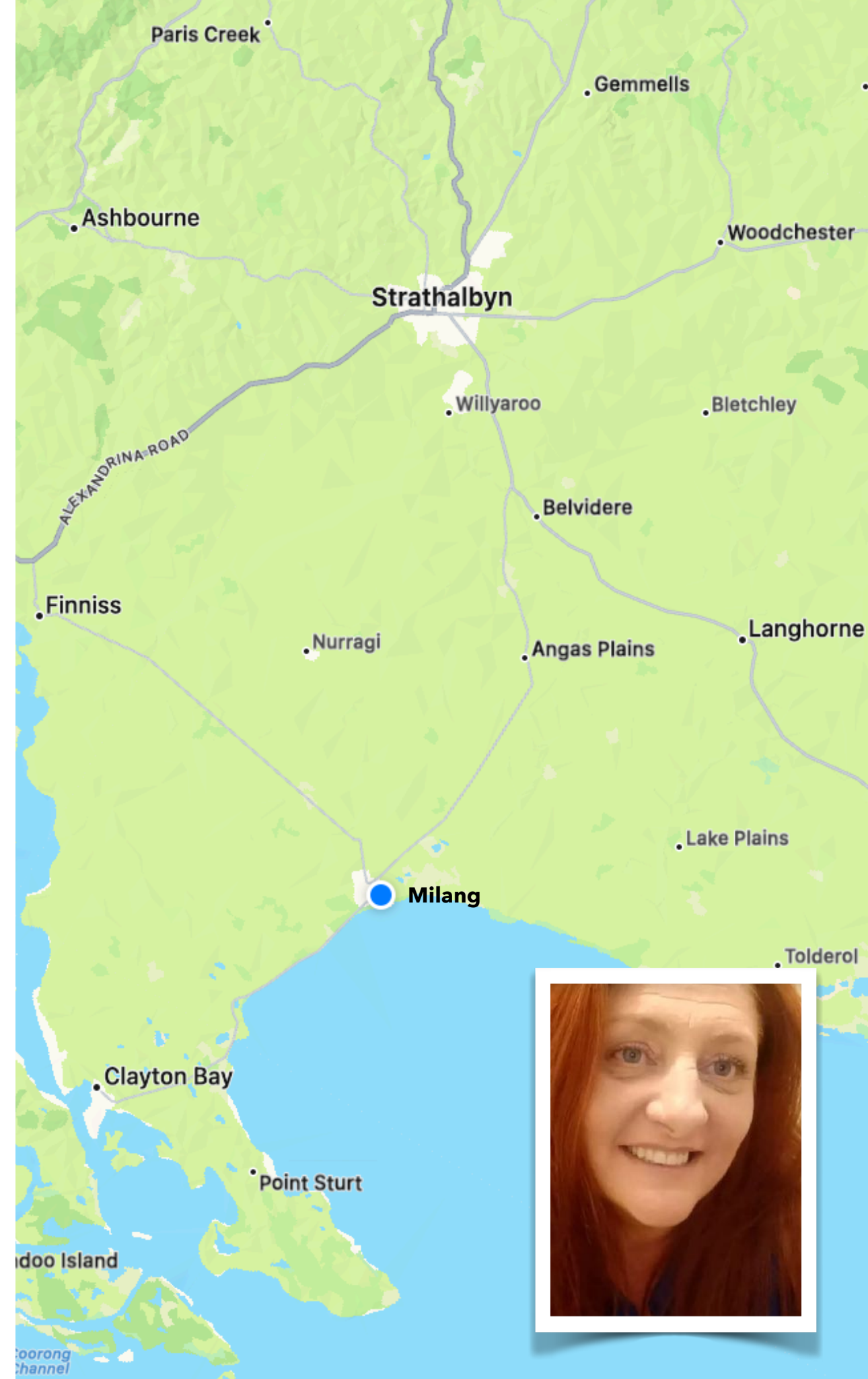
This project will focus specifically at reaching the isolated and vulnerable families and individuals in our community.

I have been offering support and training to volunteers across the region. This support to volunteers will give them extra resources to continue to assist others in their patch of the community.

Different organisations in the communities have asked for training in Mental Health - People would love to support others in their community. This training aims to build confidence. This capacity building will establish people living in community.

This project spans a cluster of 7 towns - Ashbourne, Clayton Bay, Finniss, Langhorne Creek, Milang, Strathalbyn and Woodchester.

In my time at MOSHCC I have completed some train the trainer courses which will enable me to offer this training free of charge to all in our communities. These include: 5 Ways to Wellbeing, Moving



Towards Wellness, Mental Health 1st Aid and Money Minded Coach Growing Life Connections (GLC) are now in partnership with the Royal Melbourne Hospital which authorises us to run the 5 Ways To Wellbeing training.

I wrote a successful grant application to 'The Black Dog Ride'. This grant will allow me to become a trainer in Mental Health First Aid.

I have had many invitations from groups/organisations to talk to their members at committee meetings, inviting me to be part of their organization, asking for training , resources and support. This is part of GLC / Our Towns to equip communities.

I have run some pop up stalls - eg ANZAC day football game, handing out information and answering questions regarding Mental Health.

I write an article each month in the Milang Community News with information about Mental Health/Wellness, Clayton Bay and Strath Neighbourhood Centre would both like me to do the same.

Clayton Bay Community Hall is the place where local residents go to collect their mail. They have free coffee and cake on Wednesdays to encourage residents to stay and meet others in their community. I often visit for the morning tea to talk to members of the community as they pick up their mail.

I am networking with many organisations and individuals in our

community in order to build capacity and resilience including Mens Sheds, Lions Club, Youth Groups, Sports clubs and Church groups in the regions.

Teen Challenge (Rehab residence in Strath) is just one organisation that has asked me to run training in Mental Health for residents.

In the near future we will be hosting a 'Tradie BBQ breakfast' at a local hardware store in Strathalbyn. The purpose of this is to reach our local Tradies, with a message of sharing and connecting which brings positive Mental Health

I am also working on a grant application to bring Nic Newling who is a passionate advocate for Mental Health for youth, to return to SA and speak to high school student in Strathalbyn, Mount Barker and Murray Bridge. (This is being supported by Adrian Pederick and Dan Cregan).

Mental Health / Wellness and Suicide Prevention is something I am extremely passionate about.

No day is ever the same in my role, but I often find myself smiling and wondering how I was so lucky to win this role. I love the work that I do and the many connections I have made and continue to make.

I would like to thank the many who have supported me in my role, especially the volunteers, who without their support I would not have been so successful in my role.

WE ALL HAVE STORIES TO TELL

*Everyone has their own story, their own pain.
Everyone has their own moments of happiness,
of suffering, of loneliness, of love, that have
shaped them into who they are today.
Everyone has their own story, and everyone
deserves someone who is willing to listen to it.
Don't be a dark or sad moment in a person's
story. Be a part of their light, of their happy
moments, and help them through their dark
ones.*

EMERGENCY RELIEF

Stuart Jones

The emergency relief program which runs out of the Milang Old School House Community Centre is a vital part of our service to the community.

Our primary assistance is through food relief. The food pantry is stocked from donations from the community, and through any profits made by the Community Centre.

Through this challenging year we have had some very generous donors who have brought in items directly, made donations of cash towards the pantry and also set up direct debit arrangement to donate each fortnight.

This year has been a struggle for many. Consistently we see local people and local families struggle to sometimes meet the basics needs, and come to us for support for a small amount of food to tide them over before next payment.

We have also been able to provide fuel vouchers curtesy of Raine and Horne Strathalbyn and the Strathalbyn Inter-church Council.

We thank all those who have donated over this difficult year.



CHILD CARE

Britteny Fleming, Cathy Ward & Kym Ingram

Our creche service caters for children aged 6 months to 5 years. We are open from 9:30am to 12:30pm Mondays and Wednesdays during the school terms. We are closed on public holidays. There is a limit of 10 children per session.

Fees Our daily fee is \$10.00 per session before the Child Care Subsidy (CCS) has been applied. Child Care Subsidy offers assistance to families to help with the cost of child care.

A big thank you to Rosemary Evans for all her time and support over the years with the children at our service. Rosemary was an integral part of the creche, fantastic with the children, very creative, caring, calm, and extremely hard working. We could like to say a BIG happy retirement to Rosemary and all the best for the future.

We would also like to welcome our new staff, Cathy Ward and Kym Ingram to our creche team this year.

They are helping to support Britteny Fleming in her role. Our staff work very well together and bring a variety of different skill set and qualities to the team.

All Educators have a current Working with Children Check, First Aid Certificate and Responding to Abuse and Neglect Training. We are here to support your children through their early learning Journey. We offer play-based learning activities and provide a Milang Creche Journey Folder at the end of their time with us. The folder allows us to share with families their children's growth and development that they have accomplished while at the creche.

Last but not least we would like to welcome all the new children and their families. And to anyone wanting to know more, simply give us a call or drop in and one of our friendly staff will be more than happy to help. Looking forward to another year in the Milang Community.



MILANG COMMUNITY GARDEN

Life at the Milang Community Garden has ticked along well despite all the interruptions from the Covid outbreaks, with only minimal disruptions during the lockdowns. There have been some changes in membership with quite a few new volunteers joining the garden over the last twelve months, bringing our numbers up to a maximum of 15 for a short period of time. Unfortunately, we lost one volunteer who travelled overseas to be with family prior to the outbreak of COVID, and others who have had to take a break from the garden due to family, work and health reasons. We gained 5 new volunteers during the last 12 months. Our regular attendance is approximately 7 to 12 on any given week. Most attend regularly and everybody has their own talents, professional expertise, experience and knowledge to contribute to the running of the garden.

We are always happy to welcome new volunteers with or without gardening skills, who are keen to get involved. Some of our volunteers are also new to the town and the garden has been a good way to meet and get to know local people. It is also a great environment to learn new skills and gain knowledge from our expert local gardeners!



The weekly routine includes a good chinwag over a cuppa and something delicious to eat (supplied by volunteers on a roster). This provides good bonding and time to sort out what has to be done and any issues that require discussion. Mostly of course, solving the problems of the world! Some community members pop in regularly to have a chat, bring some produce to share, and to see what goodies are on offer from the garden. During the seasons when produce is prolific, we see people every week, both local and visitors staying in the town.

Improvements to the Garden.

- The small staff corner area has been covered with shade cloth.
- The hothouse or 'tunnel' received a facelift inside with a clever adaptation of a sheep trough by the boys. Painted a lovely red and now growing tomatoes and other more delicate plants! It also provides a good space for seed propagation.
- The compost / manure bins have been tidied up and relocated with painted signs. We have also implemented a system of red and green signs to indicate which produce is ready, or not ready for harvest.
- There has been an ongoing upgrade and maintenance to taps and irrigation, which is now bringing drip irrigation with timers to more areas of the garden. This will significantly assist with more efficient watering of the garden beds, ensuring more consistent delivery of water to the plants, and less water usage during the hotter months.
- We were fortunate to have the addition of a toilet, made possible through MOSHCC.

There has been a good supply and range of quality fruit and vegetables during the year. Volunteers benefit greatly from the fresh organic produce which is shared amongst us at little or no cost. The local community also benefit from the excess produce that is put out on our cart or sold to public on Tuesday mornings for a donation. This varies from season to season, but generally there is usually plenty to go around. The Community Garden also plays an important role for social contact, friendship and mutual support for each other. Something that is vital in a small town such as Milang, especially during the recent times when Covid has impacted on everyone in the population.

Our Volunteers have had several social gatherings, enjoying a bbq onsite on two occasions, a meal at the The Bridge Hotel at Langhorne Creek and at the Oasis last Christmas. Recently a group of volunteers enjoyed a bus trip (on the community bus) to the Clayton Bay Community Garden and Nursery, Ibis Siding and Community Garden in Goolwa, with an enjoyable lunch at the Finnis General Store en route. They all enjoyed seeing how other gardeners did things and shared common interests and information.

The garden itself is well established. It provides a good space for people to be in and to enjoy growing things, sharing knowledge and relaxing in the peaceful surrounds. Being in the older central part of town it also provides a pleasant spot to walk past and to visit when open.

Earlier this year we welcomed two primary students, who attended the garden once a week over a period of several weeks to



complete a “community project”. The boys were very helpful and we all enjoyed having them. The boys worked hard, developed some new skills, and learnt something about plants and how to grow them.

The operating costs are successfully financially maintained with a small donation paid weekly, and more recently monthly, by all the volunteers. Some income also comes from the donations for produce that is purchased by the local community. The volunteers are also a resourceful and environmentally friendly lot who are very good at recycling, reusing, repairing and repurposing all kinds of materials and implements for the garden!

We are thankful to the Eastern Fleurieu School - Milang Campus for their support of this MOSHCC program through the use of the additional land and water.



COMMUNITY NEWS

Cathy Fish - Editor

The publication is very aptly described as a 'Journal' of the Milang and District Community Association in that each edition creates a journal of the activities that take place each month and forms a valuable resource for both the association and the community. The publication also provides support for businesses within the region by providing them with an affordable platform to advertise and promote their services.

The publication has been extended to include not only Milang but also the communities of Clayton Bay, Finniss, Strathalbyn and Langhorne Creek and we are trying hard to include stories, advertising and updates from across these towns and surrounding areas.

Since I took over the role back in March 2021, I have worked hard to make the publication something that I feel the community would look forward to reading while also keeping the balance with advertising and regular articles from the various community groups and organisations.

The publication relies heavily on a great volunteer support group and I am very proud to be the voluntary editor within this group.



TREASURER'S REPORT

Mike Linscott

A year with a difference as a result of the Covid epidemic.

Lakes Home Care has been the strength behind our finances and has kept the Association buoyant financially.

It has been challenging with the number of closures as a result of the lock down during the epidemic and the disruption for our staff.

The good news is that there has been an increase in the turnover this year and we have improved net profit and a good reserve in our Balance Sheet (see Auditor's report).

The increase is due to the improved performance of Lakes Home Care as a result of the increase in client numbers and good performance with other programs.

Lakes Home Care - There are changes about to take place under the My Age Care plan and the funding to providers. This will impact on Lakes Home Care. The government is about to change the method of payment. Previously all payments have been paid in advance to the provider, but as from the 1st of September 2021 payments will be made in arrears this means that we will have to fund all payments for one month and then claim from the Department. The department will take over the client's unspent funds. We have accumulated client unspent funds which we hold in reserve. We have opted to hold on to these funds and use them to bridge the gap as authorised under the plan. This means that in the future we will not hold funds on behalf of clients and any future purchases of extra services and equipment will have to be applied for directly to the Department. Fortunately, we have sufficient funds in reserve to cover any eventuality.



Butter Factory - Work on the Butter Factor has progressed over the year, and we are about to complete the first stage of the re-development. The Government Grant which has covered most of the work has been exhausted and we are now in the role of seeking additional funding. We had thought that with all the incentives being offered at the moment there would be something to cover our requirements but, most of the funding is going to existing business and is nothing available for projects such as ours. We see that our best hope is to seek some form of sponsorship.

Charity status - Perhaps the major milestone during the year was that Milang and district Community Association was approved as a Charity on the 28th of February 2021. This brought a number of important concessions to the operation of our Association which includes Tax relief. It did not however, allow us to operate as a Donation Gift Recipient (DGR). Following further information received from ACNC we are now in the process of applying for recognition as a Public Benevolent Institution (PBI). This will allow us to issue receipts for monetary donations which will be tax deductible.

Fund Raising - The pandemic impacted on our fund-raising program, and we had to cancel the Market activities which was a great shame as the steady flow of income from this activity helped us support the Butter Factory on-costs. However, we were able to hold some Concerts which were highly successful although we had to limit the numbers attending. They did however make a profit, and this helped things along. I must pay tribute to Norm Foster for all his work in organising the concerts and liaising with the artists.

No fundraising program would work without volunteers, and I would like to take this opportunity to thank all those who have helped the Association during the year. They have contributed a great deal and help with our success.

Community - People have asked where the MADCA funds are distributed. The fact is that all funds generated are used to support the community. We are getting less help through Government funding, and we are working hard to make up the difference so that we can continue programs such as emergency relief. We have many applications for help through this program with help to meet emergency living costs and accommodation. This is now all funded through our own income. It also enables us to continue with programs such as the Friday Lunch and community transport.

In answer to another question about the Butter Factory. We only spend the Government funds we receive for this project together with the funding raising that is carried out for the Butter Factory. We rely on Government Grants for the major work to be carried out. We hope in the future to receive sponsorship funds for some of the activities that will take place in the Butter Factory.

Tribute - Finally, I must pay tribute to our Office Staff headed by Stuart and Annie. They have all helped us get back on track and made the last year of business a great success.

Mike Linscott
Treasurer

Our projects are

**SUPPORTED
BY...**

We thank all our funding bodies for
the support they give to local
projects and programs through
MADCA



Alexandrina Council

Eastern Fleurieu School, Milang Campus

Lions Club of Strathalbyn

Raine & Horne, Strathalbyn

SA Department for Innovation and Skills

SA Department for Human Services

SA Department for Environment and Water

**Australian Government Department of Education
Skills and Employment**

Australian Government Department of Health

Australian Government Department of Agriculture

**Australian Government Department of Social
Services**